

LEARN INSTA COST

A Software for Estimating Project Cost &
Tender SOQ Instantly

By :

Y.A. Agboatwala &

Fatima.Y. Agboatwala

1802, Jamuna Amrut,

219, Patel Estate, S.V.Road,

Jogeshwari(W), Mumbai - 400102

Phone: 09820792254 , (022) 26783525

Url: www.supercivilcd.com,

www.agboatwala.com

Email : yaa@supercivilcd.com,

yaa@agboatwala.com,

supercivilcd@gmail.com

LEARN INSTA COST IN 8 EASY STEPS

A Software for Estimating Project Cost Instantly

Introduction	● <u>INTRO & LIMITATION</u>
New Project (File) Creation	● <u>STEP NO. 1</u>
Edit Project File	● <u>STEP NO. 2</u>
Build Project	● <u>STEP NO. 3</u>
Abstract Sheet	● <u>STEP NO. 4</u>
Total Project Cost + Consumptions	● <u>STEP NO. 5</u>
Preliminary Instant Tender	● <u>STEP NO. 6</u>
Edit Modules & Module Details	● <u>STEP NO. 7</u>
Utilities	● <u>STEP NO. 8</u>

INTRO & LIMITATIONS

- Please take Print Out of Every Step, including this page before commencing Learn. **Take a Yellow Marker Pen and Mark the Learning Process while Proceeding further.** This is Essential for Learning. A Working example is also given on our web site. Down load the Working Example. Again Practice Software using working example.
- The software calculates the Project Cost instantly, by manipulating quantities of building items of various standard modules. These modules are displayed under Build Project option.

Insta Cost software is just a rational way of getting the Project Cost based on item quantities rather than by Thumb Rule or Ball Park figures.

In order to get Instant Cost, a user has to just create a Project File, Add Modules as required in the Project and Click the Summary option to get Cost and various material Consumptions.

More the number of Modules selected, greater will be the cost accuracy of project.

The Standard 58 Modules are as under.

- MULTI-STOREY RC BUILDING
- RESIDENTIAL BUILDING WITHOUT LIFT
- RC PLANT BUILDING CLOSED FROM ALL SIDES
- RC PLANT BUILDING OPEN FROM ALL SIDES
- RC MULTI STOREY PLATFORM FOR HOUSING EQUIPMENT
- RC OFFICE BUILDING
- PLANT BUILDING IN STEEL WITH GRATING AND AC CLADDING
- PLANT BUILDING IN STEEL WITH RC FLOORS AND BRICK WALLS
- PLATFORM IN STEEL
- SINGLE STOREY SHED WITH RC COLUMNS BRICK WALLS AND TRUSSED ROOF
- SINGLE STOREY SHED WITH RC COLUMNS BRICK WALLS AND RC ROOF

- **RCC SINGLE STOREY OPEN SHED WITH TRUSSED ROOF**
- **STORAGE SHED 13.0 M HIGH WITH RC COLUMNS AND TRUSSED ROOF**
- **STORAGE SHED 7.0 M HIGH WITH RC COLUMNS & TRUSSED ROOF WITH GANTRY**
- **CONTROL ROOM**
- **CAR PARKING SHED**
- **CYCLE STAND / CAR SHED**
- **GATE POST AND TOILET BLOCK**
- **TOILET BLOCK FOR 25 USERS**
- **OPEN RECTANGULAR RC TANK RESTING ON GROUND**
- **OPEN CONCENTRIC CIRCULAR RC TANK RESTING ON GROUND**
- **LARGE FIRE WATER OPEN RC TANK RESTING ON GROUND**
- **COOLING TOWER RC FOUNDATION**
- **UNDER GROUND RC WATER TANK**
- **SETTLER TANK RC FOUNDATION**
- **FLOOD LIGHT TOWER OF 18 M HEIGHT**
- **RC WATCH TOWER OF 5.0 M HEIGHT**
- **WATCH TOWER IN STEEL**
- **STEEL BUNKER**
- **RC BUNKER**
- **CEMENT SILO**
- **ELECTRICAL CABLE TRENCH WITH CHEQUERED PLATE COVER**
- **ELECTRICAL CABLE TRENCH WITH PRE CAST SLAB COVER**
- **DOUBLE TIER PIPE RACK**
- **ELECTRICAL / INSTRUMENTATION RACK**
- **CONVEYOR GANTRY**

- RC CULVERT AT ROAD CROSSING
- PAVING
- BRICK DRAIN
- BITUMINOUS ROAD
- RING BEAM / WALL FOUNDATION
- PUMP TYPE SMALL FOUNDATION
- BOILER TYPE LARGE FOUNDATION
- COMPRESSOR TYPE FOUNDATION
- DYKE WALL AND HARD STANDING
- MS GATE WITH TUBULAR FRAME AND WICKET GATE
- MS GATE WITH CHAIN LINK AND ANGULAR FRAME
- COMPOUND WALL WITH RC GRILL
- CHAIN LINK COMPOUND WALL WITH RUBBLE MASONRY AS BASE
- RC FRAMED COMPOUND WALL WITH BRICK WALL INFILL
- BRICK MASONRY COMPOUND WALL
- SEPTIC TANK
- SOAK PIT
- INSPECTION CHAMBER
- MANHOLE
- MS LADDER
- ROAD BERM
- PLINTH PROTECTION

- **A User has to give the module parameters in specific unit.
Total Building built-up Area shall be in M2.
Tanks shall be in M3 Capacity.
Silos / Bunkers shall be in TONS of capacity.
Compound walls shall be in M.
Towers shall be in Numbers and so on**

- **Minimum Computer RAM memory of 1 GB is recommended.**

- **Use Laser OR Ink Jet Printer.**

LEARN INSTA COST STEPS BY STEP

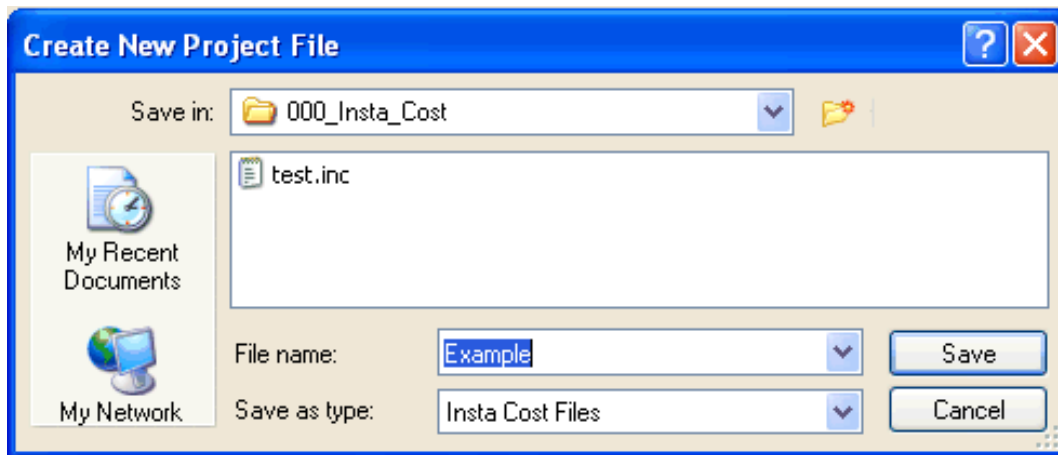
STEP NO. 1 : New Project (File) Creation

Create New Project Edit Project Build Project Summary Edit Module Files Module Details Utility

- When Program starts, the above Menu Bar is displayed. Click the " Create New Project Option ".

The following window will open.

- You must create a separate Folder / Directory to store your files. I have created a Directory called " 000_Insta_Cost " in D drive to store my Project files. Click " Create New Project File " option. A Save Window Dialog Box will open up.



- Go to " 000_Insta_Cost " folder & give a file name to your project. I have given " Example " as the name of my new project file. Click the save button. Following project window will open.

Add Project Details :

File Name : D:\000_Insta_Cost\Example.inc

Date : 04 February 2011

Organization

Project

Project No.

Consultants Fee %

Site Survey + Soil Investigation %

Site Development + Horticulture %

External Water Supply + Plumbing %

Internal +External Electricals %

Swimming Pool + Play Ground + Gym %

Fire Fighting Services %

Green Building + Solar Panels %

Approval + Mandatory Charges %

Contingencies + Price Escalation %

Miscellaneous Works %

Contractors Over Head + Profit %

EXIT

NEXT PAGE

Rate of Each Brick

Cement Rate per Bag

Sand Rate per M3

Aggregate Rate per M3

Timber Rate per M3

Reinforcement Rate per Ton

Mason Wage per Day

Carpenter Wage per Day

Helper Wage per day

Only For Multi-storey Building with Lift

Total No. of Storeys Including GF.

Total No. of Flats

Total Builtup Area of Bldg. in M2

Building Shape in Plan

Lift Cost %

Seismic Design Impact %

Extra for Raft %

Extra for Piles + Pile Caps %
(Add 8 %)

- Enter the values of relevant parameters. Note the separate exclusive parameters for Multi-Storey building with Lift. The Lift, Seismic Design Impact and extra for Raft / Piles costs will be added to basic Multi-Storey building cost. All other costs will be added to overall basic project cost.

Click the Next Page Button. Following Window will open.

DISPLAY / EDIT ITEM RATES

File Name : D:\000_Insta_Cost\Example.inc

Date : 04 February 2011

Item #	Item	Unit	Rate
1	EXCAVATION	M3	450
2	BITUMEN + SAND	M2	300
3	SOIL FILLING	M3	300
4	RUBBLE PACKING	M3	1000
5	SAND FILLING	M3	1600
6	P.C.C.(M 10)	M3	4500
7	P.C.C.(M 15)	M3	5500
8	P.C.C.(M 7.5)	M3	4200
9	CONCRETE (M 20)	M3	8500
10	CONCRETE (M 25)	M3	8800
11	PRECAST SLAB 75 THK.	M2	600
12	REINFORCEMENTS	TON	60000
13	MASONRY WORK	M3	6500
14	RUBBLE MASONRY	M3	4000
15	PLASTER 12 THK.	M2	350
16	PLASTER 20 THK.	M2	430
17	I.P.S. FLOORING	M2	650
18	TILED FLOORING	M2	2200
19	FALSE/CAVITY FLOOR	M2	5000
20	GLAZED TILE	M2	2150
21	KOTAH STONE	M2	1400
22	H.D.P.S	M2	60
23	WATER PROOFING	M2	2200
24	DOORS	M2	3800

Record No. : 1 of 58

Item No.	<input type="text" value="1"/>	Item	<input type="text" value="EXCAVATION"/>	Unit	<input type="text" value="M3"/>		
Rate	<input type="text" value="450"/>	<input type="button" value="Read Me"/>	<input type="button" value="Prev"/>	<input type="button" value="Next"/>	<input type="button" value="Last"/>	<input type="button" value="1 st"/>	<input type="button" value="Go To Rec"/>
		<input type="button" value="Update"/>	<input type="button" value="Remove"/>	<input type="button" value="Print"/>	<input type="button" value="O K"/>		

- Enter the Rates of various building items. There are 58 nos. of items.

The " Prev ", " Next ", " Last ", " 1 st ", & " Go to Rec " Buttons are for displaying / Focusing the cursor on Previous, Next, First or required Record Number respectively.

The " Clear " Button clears Table values.

The Remove Button will delete the Current Selected Record.

The " Print " Button is for printing of values from the Table, or to Create PDF File. Use laser OR Inkjet Printer.

[A free PDF Creator software is included in CD, Users may run this software to install PDF creation facility.](#)

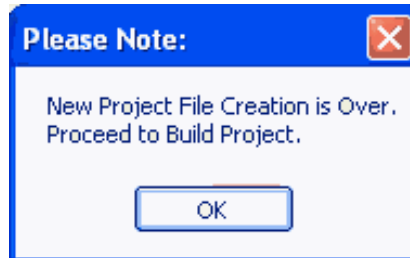
Now click the " Read Me " button, following salient feature under this option will be displayed.

- User to Edit default Item Rates.

- Quantities can be Edited Under Edit Module Option if really required.

- Items are fixed in numbers (58), new items cannot be added.
- Once the item rates are changed in this option, corresponding changed rates will get reflected in all modules.
- Use Update button to save work.
- Use Remove Button to delete selected record.

Click OK Button, following window will be displayed.



STEP NO. 1 IS OVER.

LEARN INSTA COST STEPS BY STEP

STEP NO. 2 : EDIT PROJECT

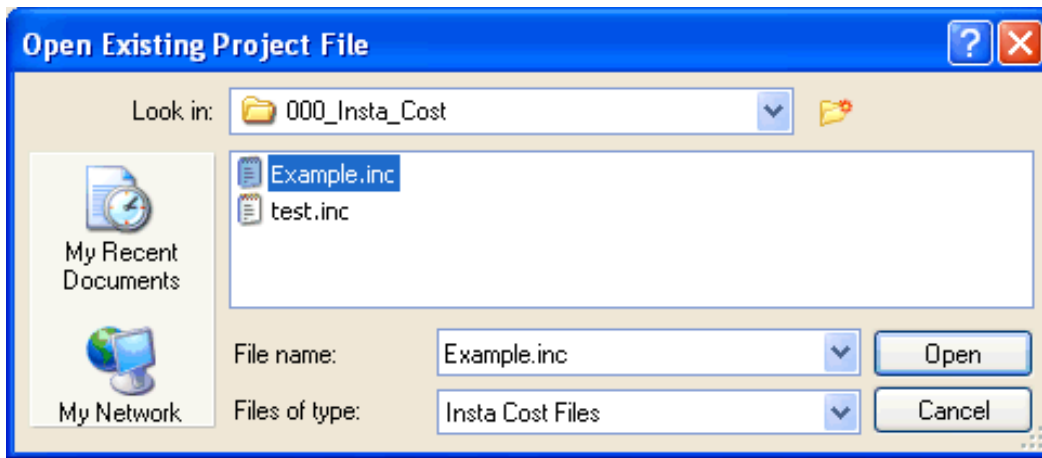
Create New Project Edit Project Build Project Summary Edit Module Files Module Details Utility

- When Program starts, the above Menu Bar is displayed.

The Edit Project Option is available to Edit the various Parameters of already created Project File.

Click the " Edit Project Option ".

The following window will open.



- Now select " Example " File & Press Open Button.

The Editing Window of project File will Open.

- Now follow the same procedure for editing as outlined in Step No. 1.

STEP NO. 2 IS OVER.

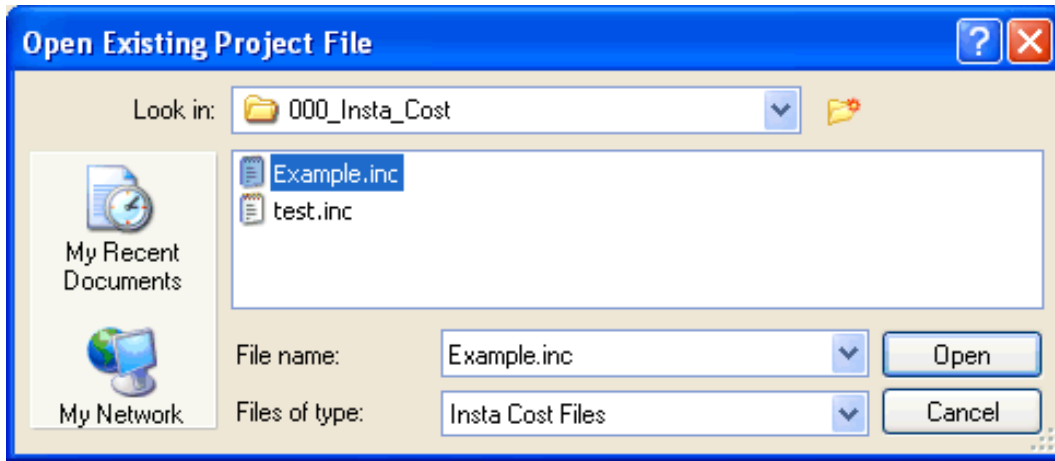
LEARN INSTA COST STEPS BY STEP

STEP NO. 3 : BUILD PROJECT

Create New Project Edit Project Build Project Summary Edit Module Files Module Details Utility

- When Program starts, the above Menu Bar is displayed. Click the " Build Project " Option.

The following window will open.



- Select the " Example " File, following window will appear.

BUILD PROJECT : DISPLAY / EDIT / ADD MODULE QUANTITY

File Name : D:\000_Insta_Cost\Example.inc

Date : 04 February 2011

Sr_No	Module	Quantity	Unit
1	MULTI-STOREY RC BUILDING	0.00	M2
2	RESIDENTIAL BUILDING WITHOUT LIFT	0.00	M2
3	RC PLANT BUILDING CLOSED FROM ALL SIDES	0.00	M2
4	RC PLANT BUILDING OPEN FROM ALL SIDES	0.00	M2
5	RC MULTI STOREY PLATFORM FOR HOUSING EQUIPMENT	0.00	M2
6	RC OFFICE BUILDING	0.00	M2
7	PLANT BUILDING III STEEL WITH GRATING AND AC CLADDING	0.00	M2
8	PLANT BUILDING III STEEL WITH RC FLOORS AND BRICK WALLS	0.00	M2
9	PLATFORM III STEEL	0.00	M2
10	SINGLE STOREY SHED WITH RC COLUMNS BRICK WALLS AND TRUSSED ROOF	0.00	M2
11	SINGLE STOREY SHED WITH RC COLUMNS BRICK WALLS AND RC ROOF	0.00	M2
12	RCC SINGLE STOREY OPEN SHED WITH TRUSSED ROOF	0.00	M2
13	STORAGE SHED 13.0 M HIGH WITH RC COLUMNS AND TRUSSED ROOF	0.00	M2
14	STORAGE SHED 7.0 M HIGH WITH RC COLUMNS AND TRUSSED ROOF WITH GAINT...	0.00	M2
15	CONTROL ROOM	0.00	M2
16	CAR PARKING SHED	0.00	M2
17	CYCLE STAND / CAR SHED	0.00	M2
18	GATE POST AND TOILET BLOCK	0.00	M2
19	TOILET BLOCK FOR 25 USERS	0.00	M2
20	OPEN RECTANGULAR RC TANK RESTING ON GROUND	0.00	M3
21	OPEN CONCENTRIC CIRCULAR RC TANK RESTING ON GROUND	0.00	M3
22	LARGE FIRE WATER OPEN RC TANK RESTING ON GROUND	0.00	M3
23	COOLING TOWER RC FOUNDATION	0.00	M3

Record No. : 1 of 58

Sr No. Module Unit

Quantity

- Enter the Quantities of Various structures / Items of works included in your project. Wherever the quantities are not present, program will assume absence of that Structure / Items of works.

Remember to put the Correct quantity in Multi-storey building option, as you have indicated during the Project Creation stage else error will be generated.

Click Read Me button to see the salient features of this option.

- This is the most Important of all Options.
- User to enter Quantities of various Modules / Buildings/Structures to be used in the Project.
- Refer Std. Module Details option before selecting and Entering Quantities of that Module.
- User shall use maximum no. of Modules present in the given Project.
- More the available Modules used, better will be the accuracy of estimate.
- Quantities of Items calculated will depend upon the no. of modules selected.
- User shall summarize the quantities of a Module & than enter data.

 **Module Quantities cannot be repeated.**

 **Use Update button to Save work.**

STEP NO. 3 IS OVER.

LEARN INSTA COST STEPS BY STEP

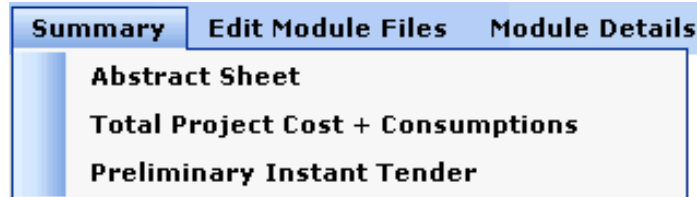
STEP NO. 4 : ABSTRACT SHEET

Create New Project Edit Project Build Project Summary Edit Module Files Module Details Utility

- When Program starts, the above Menu Bar is displayed.

Click the " Summary " Option. Following menu is displayed.

Note Summary Option shall be used only after " Build Project " option.



- Click Abstract Sheet. Now select " Example " file.

Following Graphics is displayed.

DISPLAYING ABSTRACT SHEET

Item #	Item	Unit	Rate	Quantities	Amount
1	EXCAVATION	M3	450	9120	4104000
2	BITUMEN + SAND	M2	300	0	0
3	SOIL FILLING	M3	300	651.43	195429
4	RUBBLE PACKING	M3	1000	149.83	149830
5	SAND FILLING	M3	1600	0	0
6	P.C.C.(M 10)	M3	4500	0	0
7	P.C.C.(M 15)	M3	5500	65.14	358270
8	P.C.C.(M 7.5)	M3	4200	32.57	136794
9	CONCRETE (M 20)	M3	8500	827.64	7034940
10	CONCRETE (M 25)	M3	8800	827.64	7283232
11	PRECAST SLAB 75 THK.	M2	600	0	0
12	REINFORCEMENTS	TON	60000	148.98	8938800
13	MASONRY WORK	M3	6500	2457.43	15973295
14	RUBBLE MASONRY	M3	4000	0	0
15	PLASTER 12 THK.	M2	350	13680	4788000
16	PLASTER 20 THK.	M2	430	12248.99	5267065.5
17	I.P.S. FLOORING	M2	650	1756.97	1142030.5
18	TILED FLOORING	M2	2200	4560	10032000
19	FALSE/CAVITY FLOOR	M2	5000	0	0
20	GLAZED TILE	M2	2150	0	0
21	KOTAH STONE	M2	1400	0	0
22	H.D.P.S	M2	60	651.43	39085.8
23	WATER PROOFING	M2	2200	0	0
24	DOORS	M2	3800	912	3465600

Record No. : 1 of 58

Item No. Item Unit

Rate

Total Basic Cost

- Abstract Sheet displays Quantities, Rate and Cost of various building items. Total Basic Cost is also displayed. The Items with 0.00 quantities reflect modules, not used while developing project.
By clicking " QTY = 0 " button these items can be deleted.

Click Read Me button to see the salient features of this option.

- Abstract Sheet reflects the summary of total Quantities of Std. Items Used in the Project.
- The Quantities have been worked out from our Default Modules.
- The Rates are User defined.
- If a User wants to change the Rates of items he can use Edit Project Option.
- Amount reflected here is summation of Item Costs.
- For Total Project Cost, refer Total Cost Option.
- Note that items having 0.00 amount do not have any quantities associated with them.
- User can remove items by clicking Remove button.
- Use Update button to save work.
- Use Qty = 0 Button to delete all records having Nil Quantities.
- Use Print Option to get hard Copy or Export to PDF format.

STEP NO. 4 IS OVER.

LEARN INSTA COST STEPS BY STEP

STEP NO. 5 : Edit Settings

Create New Project Edit Project Build Project Summary Edit Module Files Module Details Utility

● When Program starts, the above Menu Bar is displayed.

Consider the " Files Option ".

Click the " Files " option in the MENU bar. The following window will open.



□ Click Edit Settings Option.
Following Graphics is displayed.

SHOW FLAG / REPORT PARAMETER WHEN :

Flag : Cost of Section is > % of STD. Flag : Cost of Section is < % of STD.

Flag : Cost of Item is > % of STD. Flag : Cost of Item is < % of STD.

Report : Cost of Following Sections Increased by % (For all Bidders)

<input checked="" type="checkbox"/>	A
<input type="checkbox"/>	B
<input type="checkbox"/>	C
<input type="checkbox"/>	D
<input checked="" type="checkbox"/>	E

(Double Click to Select)

Report : Cost of Following Sections Decreased by % (For all Bidders)

<input type="checkbox"/>	A
<input checked="" type="checkbox"/>	B
<input type="checkbox"/>	C
<input type="checkbox"/>	D
<input type="checkbox"/>	E
<input checked="" type="checkbox"/>	F

(Double Click to Select)

Read Me **Summary** **O K**

- This is the most interesting feature of software.
 When Cost of a Section is > Mentioned limit a Flag Like ### will be Displayed in its Report.
 When Cost of a Section is < Mentioned limit a Flag Like \$\$\$ will be Displayed in its Report.
 When Cost of an Item is > Mentioned limit a Flag Like ### will be Displayed in its Report.
 When Cost of an Item is < Mentioned limit a Flag Like \$\$\$ will be Displayed in its Report.
 Cost of Selected Sections are Increased by Mentioned limit & Total Costs will be Displayed for All bidders.
 Cost of Selected Sections are Decreased by Mentioned limit & Total Costs will be Displayed for All bidders.
- The accuracy of Standard Rate calculation is the Key to deciding above factors.
 More accurate the Standard Rate, the Lesser shall be the Value of flags.
 A Rate lower than say 25 % of Standard Rate will call for closer look at Bidders Rate.
 Sometimes contractors quote a value less than the basic price of Materials by mistake or ignorance. Such Rates shall be brought to the notice of Contractor, else contractor may runaway leaving the work half done. There is nothing like free lunch.
 A user may Use our [SUPER RATE ANALYSIS](#) software to identify such rates.
 Sometimes smart contractors quote lesser rate for a particular item, assuming that the quantities of such items will increase during construction and quote very high rate for lesser quantity items. Hence Options for Selected Increase or Decrease of Sectional Cost is given to identify such Bidders.
 Read Me button will display salient feature of this option.
- Summary Option displays the Selected Settings. Click Summary Option. Following Graphics is displayed.

File Name : D:\0000Bid_Ana\Example_1.bid
 Date : 09 July 2009

Flag If Cost of Section is Increased by 10 %

Flag If Cost of Section is Decreased by 20 %

Flag If Cost of Item is Increased by 15 %

Flag If Cost of Item is Decreased by 25 %

Report If Cost of Following Sections are Increased by 25 %

Section A
 Section E

Report If Cost of Following Sections are Decreased by 15 %

Section B
 Section F

STEP NO. 5 IS OVER.

LEARN INSTA COST STEPS BY STEP

STEP NO. 6 : Bidder's Rating + Parameters

Create New Project Edit Project Build Project Summary Edit Module Files Module Details Utility

- When Program starts, the above Menu Bar is displayed.

Consider the " Files Option ".

Click the " Files " option in the MENU bar. The following window will open.



- Click Bidders Rating + Parameters Option. Select File Name (Example_1) and then Select Bidder no. 1 : Build Tech. Following Graphics is displayed.

{ A } Rating Parameters : Give Values - Total not to Exceed 100

1. ISO 9000 Certification/Implementation	<input type="text" value="5"/>	2. Technical Capability	<input type="text" value="5"/>
3. Financial Capability	<input type="text" value="5"/>	4. Managerial Competence	<input type="text" value="5"/>
5. Commitment to Schedule	<input type="text" value="5"/>	6. After sales Service	<input type="text" value="5"/>
7. Market Information	<input type="text" value="5"/>	8. Relationship with Company	<input type="text" value="5"/>
9. Credit Terms	<input type="text" value="5"/>	10. Experience of Similar Job	<input type="text" value="5"/>
11. Employee Training	<input type="text" value="5"/>	12. Disposition to Suggestions	<input type="text" value="5"/>

{ B } Financial Parameters

13. Business Registration/License No.	<input type="text" value="1234"/>	14. Date of Registration	<input type="text" value="12/12/2000"/>
15. Tax paid in Last Financial Year	<input type="text" value="40000"/>	16. Ave. Turnover of Last 3 Yrs.	<input type="text" value="1200000"/>
17. Average Net Profit of Last 3 Years	<input type="text" value="100000"/>	18. I. T. clearance certificate Submitted	<input type="text" value="Y"/>

{ C } Basic Labour Costing Parameters

19. Skilled Labour Rate / Day	<input type="text" value="250"/>	20. Un-Skilled Labour (M) Rate	<input type="text" value="180"/>
21. Un-Skilled Labour (F) Rate / Day	<input type="text" value="150"/>		

{ D } Basic Material Costing Parameters

22. Cement Rate / Bag	<input type="text" value="250"/>	23. Sand Rate / M3	<input type="text" value="600"/>
24. Aggregate Rate / M3	<input type="text" value="700"/>	25. Brick Rate / No.	<input type="text" value="2.5"/>
26. Reinforcement Rate / Ton	<input type="text" value="50000"/>	27. Aluminum Rate / Kg	<input type="text" value="180"/>

{ E } Equipment Schedule at Site

28. No. of Mixers	<input type="text" value="3"/>	29. No. of Vibrators	<input type="text" value="8"/>
30. Shuttering in M2	<input type="text" value="3000"/>	31. No. of Trucks + Dumpers	<input type="text" value="4"/>
32. No. of Welding Machines	<input type="text" value="6"/>	33. No. of Cranes + Winches	<input type="text" value="4"/>
34. No. of Shovels / Bulldozers	<input type="text" value="1"/>	35. No. of Pumps + Compressors	<input type="text" value="4"/>
36. No. of Testing Equipments	<input type="text" value="5"/>	37. No. of Computers	<input type="text" value="6"/>

{ F } Proposed Site Organization

38. No. of Senior Site Engineers	<input type="text" value="1"/>	39. No. of Junior Site Engineers	<input type="text" value="3"/>
40. No. of QS	<input type="text" value="1"/>	41. No. of Site Supervisors	<input type="text" value="6"/>
42. No. of Accounting Staff	<input type="text" value="3"/>	43. No. of Security Personnel	<input type="text" value="6"/>
44. No. of Store Keepers	<input type="text" value="2"/>	45. No. of Draughtsman	<input type="text" value="1"/>

{ G } Average Schedule of Labour Strength at Site

46. No. of Skilled Labours	<input type="text" value="100"/>	47. No. of Un-Skilled Labours - M	<input type="text" value="100"/>
48. No. of Un-Skilled Labours - Female	<input type="text" value="100"/>		

File Name : D:\0000Bid_Ana\Example_1.bid
Date : 08 July 2009

Bidder : 1 : Buid Tech

- Bidder's Parameter Ratings are basically subjective in nature. In order to reduce pure subjectivity, we have added various other parameters to make it somewhat objective. Total Rating Marks given to a shall not > 100.0. A Healthy Financial Parameters reflect Financial Capability & Competence of its Top Management. Basic Labor & Material rates at site reflects Contractors understanding of Site Conditions. A extremely high or Low rate may indicate that contractor has not visited the site & got acquainted with its conditions. Basic Labor & Material Rates are also helpful in Rate Analysis & in deciding Day Works (extra item) Rates. Equipment Schedule, Supervisory & Labor Strength at site Reflects resourcefulness & Commitment of contractor to Schedule as well as to QA / QC. The average labor strength at site shall be collaborated with the Bar Chart of project produced by the Contractor. [Refer our QTY software.](#) Read Me button will display salient feature of this option.

STEP NO. 5 IS OVER.

LEARN INSTA COST STEPS BY STEP

STEP NO. 7 : Reports - Part 1

Create New Project Edit Project Build Project Summary Edit Module Files Module Details Utility

- When Program starts, the above Menu Bar is displayed.

Consider the " Reports Option ".

Click the " Reports " option in the MENU bar. The following window will open.

Reports	Utilities	Learn
Sectional + Total Standard Cost		
Sectional + Total Cost : Bidder		
Sectional + Total Cost : ALL		
Item Cost : ALL		
Item Cost > and < : Flag		
Sec. Cost : Sorting A/D Order + Flag		
Increase / Decrease : Sec. Cost		
Rating + Parameters		

- There are 8 Report options & all are having different flavor.
A user can print the Report directly or Copy the Text & Paste it to any Word Editor, whenever the Button is displayed.
Click " Sectional + Total Standard Cost " .
Sectional Cost & Total Standard Tender Cost will be displayed after Example_1 File is Selected.
Following Report is a Part Display.

Sectional and Total Cost of Standard Tender

File Name : D:\0000Bid_Ana\Example_1.bid

Date : 08 July 2009

Organization : ABC Ltd.

Nature of Work (1) : Admin Building.

Nature of Work (2) : Water Tank.

Nature of Work (3) : Pump House.

Nature of Work (4) : Garden + Compound Wall + GF Slab.

Project No. : 8912

Building ID : Wing A

Total Builtup Area of Building in sft : 20000

Commencement Date : 2/7/2009

Expected Completion Date : 2/7/2009

Expected Estimated Cost : 45000000 (At Feasibility Stage)

Expected Cost in Rs/sft : 2250

Person Responsible : Shri R R Mistry

Designation : Project Manager

Consultants Name : Super Civil CD

Consultants Representative : Shri Y A Agboatwala

Total Cost of Section A : Preparatory Work = 42200

Total Cost of Section B : Earth Work / Anti Termite Treatment = 143300

Total Cost of Section C : Mortars = 56600

Total Cost of Section D : Plain Cement Concrete = 256860

Total Cost of Section E : Reinforced Cement Concrete = 757310

Total Cost of Section M : Roofing/Terracing/Ceiling/RW Pipe = 1370728.5

Total Cost of Section H : Finishing / Plastering / Pointing = 1262181.84

Total Cost of Section P : Painting and Polishing = 4116834.06

Total Cost of Section Q : Building Repairs = 1203525

Total Cost of Section R : Dismantling & Demolishing = 596799

Total Cost of Section S : Miscellaneous Works = 10507029

Total Cost of Section T : Road Work = 8902942.38

Total Cost of Section U : Horticulture & Landscaping = 5126.75

Total Cost of Section V : Sanitary Installations = 1993160

Total Cost of Section W : Water Supply = 23500

Total Cost of Section X : Drainage and Sewage = 31255

Total Cost of Section Z : Water Proofing = 861011.2

Total Cost of Standard BID = 47819559.15

Expected Estimated Cost : 45000000 (At Feasibility Stage)

Estimated Cost is Less than Tender Cost by 6.27 %

Tender Cost in Rs/sft = 2390.98

If a user clicks " Sectional + Total Cost : Bidder ", Individual Sectional & Total Cost of Selected Bidder will be displayed. Basically this Option is for Bidder, to whom the Client has Exported the Tender File for Adding Item Rates. Bidder can find out the Tender Cost after adding Rates to all Items bearing quantities.

If a user clicks " Sectional + Total Cost : ALL " Option, Individual Sectional & Total Cost of All Bidders along with Standard Costs will be displayed. Part Report is Displayed as under.

Total Cost of Standard Section T : Road Work = 8902942.38
Total Sectional Cost of Section T For Bidder no. 1 = 9297127.75 { Bidder Cost is > 4.43 % }
Total Sectional Cost of Section T For Bidder no. 2 = 10096652.5 { Bidder Cost is > 13.41 % }

Total Cost of Standard Section U : Horticulture & Landscaping = 5126.75
Total Sectional Cost of Section U For Bidder no. 1 = 7177.45 { Bidder Cost is > 40 % }
Total Sectional Cost of Section U For Bidder no. 2 = 4562.81 { Bidder Cost is < 11 % }

Total Cost of Standard Section V : Sanitary Installations = 1993160
Total Sectional Cost of Section V For Bidder no. 1 = 2021900 { Bidder Cost is > 1.44 % }
Total Sectional Cost of Section V For Bidder no. 2 = 1827505 { Bidder Cost is < 8.31 % }

Total Cost of Standard Section W : Water Supply = 23500
Total Sectional Cost of Section W For Bidder no. 1 = 25000 { Bidder Cost is > 6.38 % }
Total Sectional Cost of Section W For Bidder no. 2 = 28900 { Bidder Cost is > 22.98 % }

Total Cost of Standard Section X : Drainage and Sewage = 31255
Total Sectional Cost of Section X For Bidder no. 1 = 35250 { Bidder Cost is > 12.78 % }
Total Sectional Cost of Section X For Bidder no. 2 = 35250 { Bidder Cost is > 12.78 % }

Total Cost of Standard Section Z : Water Proofing = 861011.2
Total Sectional Cost of Section Z For Bidder no. 1 = 739931.5 { Bidder Cost is < 14.06 % }
Total Sectional Cost of Section Z For Bidder no. 2 = 1210797 { Bidder Cost is > 40.62 % }

Total Cost of Standard Tender = 47819559.15
Total Cost of Tender For Bidder no. 1 = 50052237.95 { Bidder Cost is > 4.67 % }
Total Cost of Tender For Bidder no. 2 = 47139742.04 { Bidder Cost is < 1.42 % }

Bidder no. 1 is Buid Tech
Bidder no. 2 is General Constructions

If a user clicks " Item Cost : ALL ", Option, Individual Item Cost of Selected Bidder along with Standard Item Cost will be displayed.

If a user clicks " Item Cost > and < : Flag " Option, Individual Item Cost of Selected Bidder along with Standard Item Costs will be displayed as per Flag Indicated in " Settings " Option. Part Report is Displayed as under.

Item Cost Comparison Between Standard Tender & Bidder no. 1

: Item Cost Greater than 15 % of STD.
\$\$\$: Item Cost Less than 25 % of STD.

Item No. A1 : CLEARING OF JUNGLE
Standard Cost of Item No. A1 = 2000
Cost of Item No. A1 For Bidder no. 1 = 2400 : ####

Item No. C10 : CEMENT MORTAR 1:4
Standard Cost of Item No. C10 = 56600
Cost of Item No. C10 For Bidder no. 1 = 65090 : ###

Item No. D2 : PCC 1 : 1.5 : 3 UP TO PLINTH LEVEL
Standard Cost of Item No. D2 = 212000
Cost of Item No. D2 For Bidder no. 1 = 159000 : \$\$\$

Item No. D13 : PCC 1 : 1.5 : 3 III SUPER STRUCTURE
Standard Cost of Item No. D13 = 44860
Cost of Item No. D13 For Bidder no. 1 = 33645 : \$\$\$

Item No. E2 : RCC 1 : 1.5 : 3 UP TO PLINTH LEVEL
Standard Cost of Item No. E2 = 323550
Cost of Item No. E2 For Bidder no. 1 = 375000 : ###

Item No. F1 : BRICK WORK III CM 1:6 UP TO PLINTH
Standard Cost of Item No. F1 = 84210
Cost of Item No. F1 For Bidder no. 1 = 105000 : ###

Item No. G1 : RANDOM RUBBLE MASONRY III CM 1:6 UP TO PLINTH
Standard Cost of Item No. G1 = 669600
Cost of Item No. G1 For Bidder no. 1 = 900000 : ###

Item No. L37 : GLAZED TILE FLOORING
Standard Cost of Item No. L37 = 1565329.42
Cost of Item No. L37 For Bidder no. 1 = 1999995 : ###

Item No. P28 : PLASTIC EMULSION PAINT
Standard Cost of Item No. P28 = 152903.54
Cost of Item No. P28 For Bidder no. 1 = 199439.4 : ###

STEP NO. 7 IS OVER.

LEARN INSTA COST STEPS BY STEP

STEP NO. 8 : Reports - Part 2

Create New Project Edit Project Build Project Summary Edit Module Files Module Details Utility

- When Program starts, the above Menu Bar is displayed.

Consider the " Reports Option ".

Click the " Reports " option in the MENU bar. The following window will open.

Reports	Utilities	Learn
Sectional + Total Standard Cost		
Sectional + Total Cost : Bidder		
Sectional + Total Cost : ALL		
Item Cost : ALL		
Item Cost > and < : Flag		
Sec. Cost : Sorting A/D Order + Flag		
Increase / Decrease : Sec. Cost		
Rating + Parameters		

- There are 8 Report options & all are having different flavor.
A user can print the Report directly or Copy the Text & Paste it to any Word Editor, whenever the Button is displayed.
Click " Sec. Cost : Sorting A/D Order + Flag " .
Standard Sectional & Total Cost along with all Bidder's Sectional & Total Cost will be Displayed after Example_1 File is Selected. The Flag shown is as per Settings Option.
Click Column Headers to Sort Sectional Cost & Total Cost in Ascending or Descending Order.
Following Report is a Part Display.

DISPLAYING COSTS IN A/D ORDER + FLAG

Cost Greater than 10 % of STD.

\$\$\$ Cost Less than 20 % of STD.

Bidder #	Bidder's Name	Section	Cost	Remark
0	Standard	A	42200	
1	Buid Tech	A	50640	###
2	General Constructions	A	40750	
0	Standard	B	143300	
1	Buid Tech	B	114640	\$\$\$
2	General Constructions	B	163000	###
0	Standard	C	56600	
1	Buid Tech	C	65090	###
2	General Constructions	C	65000	###
0	Standard	D	256860	
1	Buid Tech	D	192645	\$\$\$
2	General Constructions	D	235250	
0	Standard	E	757310	
1	Buid Tech	E	858000	###
2	General Constructions	E	892525	###
0	Standard	F	348410	
1	Buid Tech	F	305000	
2	General Constructions	F	332175	
0	Standard	G	669600	
1	Buid Tech	G	900000	###
2	General Constructions	G	700500	
0	Standard	H	84152	
1	Buid Tech	H	90000	

Bidder no. 1 is Buid Tech
 Bidder no. 2 is General Constructions

- If a user clicks " Increase / Decrease : Sec Cost " Option, Sectional & Total Cost of All Bidders as well as Standard Costs will Increase or Decrease as indicated in settings. Part Report is Displayed as under.

INCREASE / DECREASE IN SECTIONAL COSTS AS PER SETTINGS

Increase in Sec. Costs by 25 % of STD.

Decrease in Sec. Costs by 15 % of STD.

Bidder #	Bidder's Name	Section	Cost
1	Buid Tech	S	10507029
2	General Constructions	S	9704689.35
0	Standard	T	8902942.38
1	Buid Tech	T	9297127.75
2	General Constructions	T	10096652.5
0	Standard	U	5126.75
1	Buid Tech	U	7177.45
2	General Constructions	U	4562.81
0	Standard	V	1993160
1	Buid Tech	V	2021900
2	General Constructions	V	1827505
0	Standard	W	23500
1	Buid Tech	W	25000
2	General Constructions	W	28900
0	Standard	X	31255
1	Buid Tech	X	35250
2	General Constructions	X	35250
0	Standard	Z	861011.2
1	Buid Tech	Z	739931.5
2	General Constructions	Z	1210797
0	Standard	ALL	47945680.15
1	Buid Tech	ALL	50216451.95
2	General Constructions	ALL	47298784.54

Bidder no. 1 is Buid Tech
 Bidder no. 2 is General Constructions

The Last Reporting Display is for " Rating + Parameter " Option.
 Part Report is Displayed as under.

Bidders Rating Parameters

- < Bidder No 1 > ISO 9000 Certification/Implementation : 15
- < Bidder No 2 > ISO 9000 Certification/Implementation : 0
- < Bidder No 1 > Technical Capability : 10
- < Bidder No 2 > Technical Capability : 20
- < Bidder No 1 > Financial Capability : 5
- < Bidder No 2 > Financial Capability : 5
- < Bidder No 1 > Managerial Competence : 10

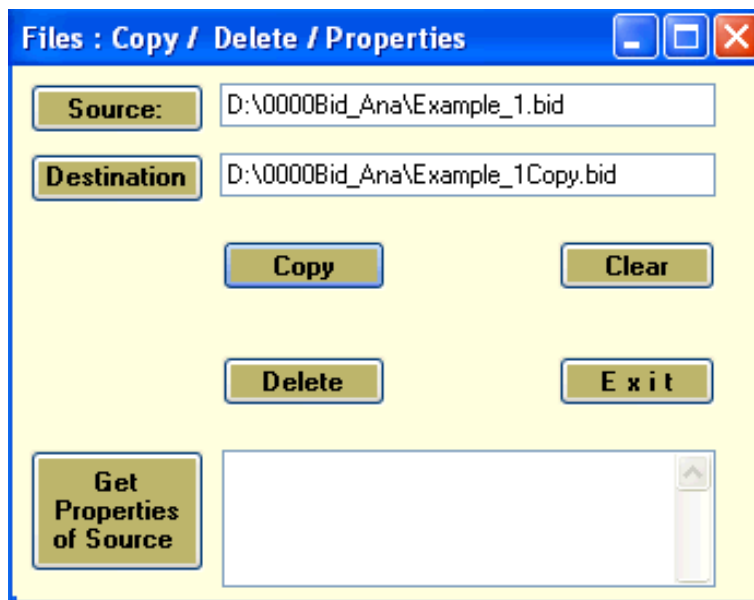
< Bidder No 1 > No. of Senior Site Engineers : 1
 < Bidder No 2 > No. of Senior Site Engineers : 1
 < Bidder No 1 > No. of Junior Site Engineers : 3
 < Bidder No 2 > No. of Junior Site Engineers : 3
 < Bidder No 1 > No. of QS : 1
 < Bidder No 2 > No. of QS : 1
 < Bidder No 1 > No. of Site Supervisors : 6
 < Bidder No 2 > No. of Site Supervisors : 3
 < Bidder No 1 > No. of Accounting Staff : 3
 < Bidder No 2 > No. of Accounting Staff : 2
 < Bidder No 1 > No. of Security Personnel : 6
 < Bidder No 2 > No. of Security Personnel : 4
 < Bidder No 1 > No. of Store Keepers : 2
 < Bidder No 2 > No. of Store Keepers : 1
 < Bidder No 1 > No. of Draughtsman : 1
 < Bidder No 2 > No. of Draughtsman : 0
 < Bidder No 1 > No. of Skilled Labours : 100
 < Bidder No 2 > No. of Skilled Labours : 75
 < Bidder No 1 > No. of Un-Skilled Labours - Male : 100
 < Bidder No 2 > No. of Un-Skilled Labours - Male : 70
 < Bidder No 1 > No. of Un-Skilled Labours - Female : 100
 < Bidder No 2 > No. of Un-Skilled Labours - Female : 90

Bidders Rating :

< Bidder No 1 > Rating : 80
 < Bidder No 2 > Rating : 64

Bidder no. 1 is Buid Tech
 Bidder no. 2 is General Constructions

- Click Utilities Option. Following Window Opens up. This option is for Copying & Deleting of Bid Analysis Files. Indicate Source & Destination File for Copying & Indicate only Source File for Deleting all Bid Analysis Files. In Order to view properties of a File, Browse for the file name by clicking on "Source" button. Click on "Get Properties of Source" button



STEP NO. 8 IS OVER.

OTHER SOFTWARES:

SUPER CIVIL CD - Single Point Solution To Your Civil Engineering Needs

SUPER RATE ANALYSIS - Rate Analysis Of 1299 Nos. Of Civil Engineering Items

2D FRAME ANALYSIS - Discover The Beauty Of Structural Analysis

R C F - A Software for Analysis, Design, Estimation & Costing of RCC Floors

S S F - Analysis, Design, Estimation & Costing of Steel Buildings, revised as per IS 800 : 2007

Q T Y - Quantity Estimation & Cost, Project Control

SUPER REAL VALUATION - A Software For Immovable Properties

ROADS - Pavement Design & Rate Analysis Of Road Items

ROAD ESTIMATE - Quantity Estimation & Cost, Project Control For Road

ELECTRIC COST - Costing, Project Control & MDS For Electrical Projects

HVAC COST - Costing, Project Control & Design For HVAC Engineers

BILLING JI - A Database Management Software For General Billing

RA BILL - A Database Management Software For Item Rate Contract Billing

BUILDERS BILL - A Database Management Software for Billing of Lump sum Contracts

BID ANALYSIS - A Software For Technical & Commercial Tender Analysis

RAFT FOUNDATION - Analysis, Design, Estimation, Costing & Drawing of RCC Raft Foundation

STEEL 2007 - Limit State design of Steel as per IS 800 : 2007

SITE CONTROL - A Management Software for Resource Control At Site.

COMPOSITE - A Software for Analysis, Design, Costing & Drawing of Composite Floor Buildings

DESIGN & DRAWING CONTROL - A DBM Software for Control of Design & Drawing Manhours.

FLAT SLAB - A Software for Analysis, Design, Estimation, Costing & Drawings of Flat Slabs

FLAT RAFT - A Software for Analysis, Design, Estimation, Costing & Drawings of Rigid RCC Flat Rafts

OPTIMIZE BAR - A Software for Optimization of Reinforcements from Existing Bar Bending Schedule

OPTIMIZE STEEL - A Software for Optimization of Steel Sections from Existing Fabrication Drawing

AutoQty - A Software for Automatic Quantity & Cost Estimation from AutoCAD Drawings